



All Rights Reserved

Materials and specifications are subject to change without notice.
Featured machines in photos may include additional equipment.
See your XCMG dealer for available options.



XE55E

Hydraulic Excavator

Euro Stage V



www.xcmg.com

XCMG Regional Departments:

Europe	(+86-516) 87739703 87739218 87739537	Africa	(+86-516) 87735009 87739222 87739283
West Asia & North Africa	(+86-516) 87739702 87739202 87739223	Central Asia	(+86-516) 87739236 87739239 87739538
Asia-Pacific	(+86-516) 87739128 87739500 87739529	America	(+86-516) 87739285 87739551 87739710

XUZHOU CONSTRUCTION MACHINERY GROUP IMP. & EXP. CO., LTD

Add: No.1, Tuolanshan Road, Xuzhou Economic Developing Zone, Jiangsu, China 221004

Fax: (+86-516) 87739230

E-mail: export@xcmg.com



Advanced configuration

Ecological and economical

- ▶ High pressure direct injection spark ignition engine compliant with Euro stage V and North American Tier 4F Emission Standard
- ▶ The excellent matching of hydraulic system and engine is more powerful and fuel saving
- ▶ Exhaust gas recirculation (EGR), diesel oxidation catalyst (DOC) and diesel particulate filter (DPF) technology is more environment-friendly

Multiple application

- ▶ Short tail design, small radius of slewing to achieve small space flexible operation
- ▶ The soil shovel can be deflected left and right to work more efficiently in a small space
- ▶ Multiple additional configurations meet different operating requirements

Comfortable operating experience

- ▶ Fresh air conditioning to ensure the appropriate temperature
- ▶ Toughened glass cockpit with good safety view
- ▶ Detailed design concept improves comfort



Safe and durable

- ▶ Integrated body design
- ▶ Strengthened Structure, Stress dispersing
- ▶ Upgrade undercarriage structure to improve load bearing performance

Convenient maintenance

- ▶ Easy maintenance design concept makes your maintenance done without dead angle
- ▶ The high pressure quick change pipeline, the flow adjustable spare pipeline lets you use safely

Excellent after-sales service

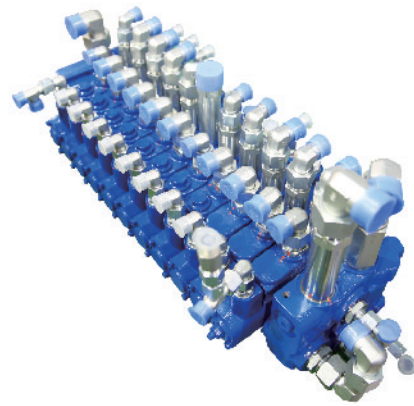
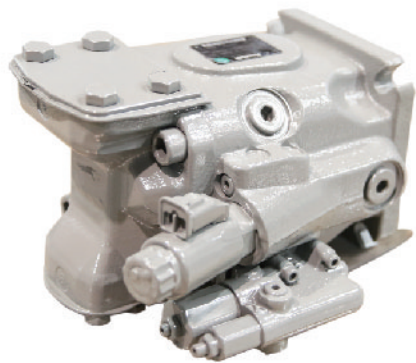
- ▶ Global after-sales service system and quick response mechanism
- ▶ Real-time technical consultation and maintenance

Ecological and economical

- ▶ Equipped with high pressure direct injection spark ignition engine, each drop of fuel is sufficiently burned, which brings better fuel economy;
- ▶ More accurately controlled fuel injection time and lower noise, the technologies such as exhaust gas recirculation (EGR), diesel oxidation catalyst (DOC) and diesel particulate filter (DPF) make the engine compliant with Euro stage V emission standard



- ▶ 1. The new-generation hydraulic components combined with the latest research achievements have higher efficiency, more accurate control and higher reliability so that strong digging force and excellent operating efficiency are ensured



- ▶ 2. The hydraulic control and electric control are dynamically integrated with the adoption of load self-adaptation control technology, the load follows the engine power in real time, making full use of each drop of fuel. The fuel is saved by 9% in E mode and the efficiency is increased by 22% in P mode
- ▶ 3. The powers of hydraulic pump and engine match intelligently, which determines working condition automatically, ensures flow output, decreases engine speed ratio and ensures working efficiency of excavator.



Multiple application conditions



- ▶ 1. The short tail design with short slewing radius, the left and right swing angle of working device is respectively 75° and 50°, it can realize complex operation together with upper structure slewing to ensure that the digging is parallel with wall surface in narrow space through the cooperation of superstructure slewing so as to easily deal with various operating conditions.

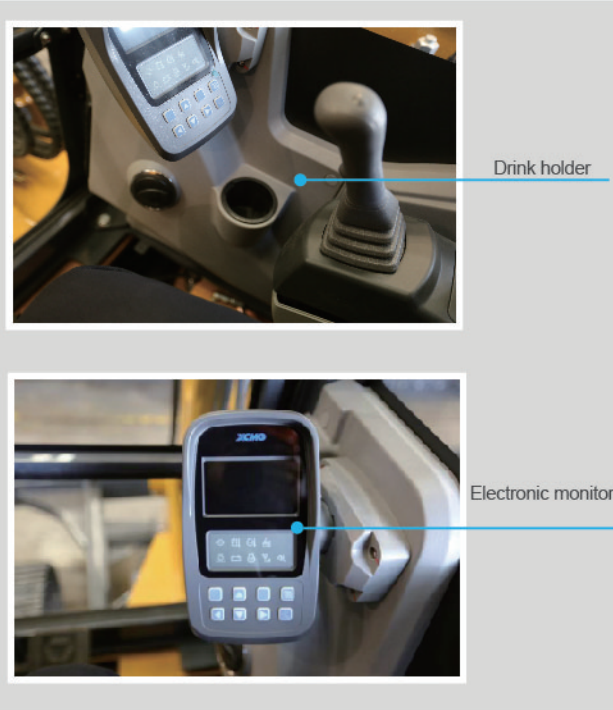
- ▶ 2. The bulldozing deflection can increase operating methods in the narrow lanes, and the blade can be deflected by 25° respectively to the left



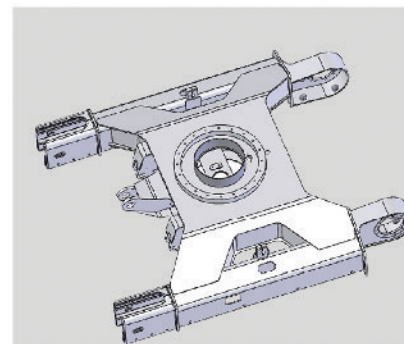
- ▶ 3. One set of high pressure quick change pipeline, two sets of standby pipelines with adjustable flow, more selections of machines and tools are provided, the adjustable flow control make users' operation more comfortable.

Comfortable and reliable

- ▶ 1. Fresh air conditioning system is equipped in large view brand new cab, which brings better cooling and heating effects and more comfortable operating environment.
- ▶ 2. The cab, undercarriage and console are integrated by adopting advanced welding technology, which greatly reduces indoor noise and ensures the comfort of operator.



- ▶ 1. Large area toughened glasses are equipped on the cab, which ensures the strength meanwhile improves vision, floodlight is equipped on the roof of the cab to ensure accurate and safety operation at night
- ▶ 2. Strengthened boom and arm, adjusted structure and dispersive stress greatly improve service life.
- ▶ 3. With X-frame chassis structure, reinforced plate and enlarged box cross section, its bearing performance is greatly improved.



Maintenance and service

- ▶ 1. After the hood is opened, the maintenances of diesel engine filter and oil filter are within reach; the inspection and refilling of oil and air conditioner refrigerant are extremely convenient.
- ▶ 2. A wide range of after - sales service system, quick - response rescue mechanism to ensure that you use at ease



Standard configuration

Name of equipment	XE55E
Engine model	2403
Emission level	North America 4F
Oil-water separator with water level indication sensor	
Air cleaner (equipped with air cleaner blockage indicator)	
Double filter element of air filter	
Collector type engine oil filter	
Collector type fuel main filter	
Fan shroud	
Radiator auxiliary water tank	
Oil-water separator	
Alternator	

	Engine mounting system
	Fuel level sound prompting system
	Fuel radiator
	Automatic idle speed
	Boom deflection line
	Control valve with main overflow valve
Hydraulic system	Pilot filter
	Oil suction filter
	Accumulator
	Hydraulic oil ISO VG 46
	Gauge pressure monitoring
	AM - FM radio with digital display
	Adjustable seat armrest
	Seat belt (51 mm [2 "] wide)
	Front window washer
	Footrest board
	Openable windscreen with auxiliary device
	Removable front and lower windshield
Cab and interior trim	Laminated windshields and other toughened windows
	Sliding door upper window
	Luxury seat
	Color liquid crystal display capable of displaying warning information, filter / liquid replacement information and working hours
	Control handle
	Travel control pedal with detachable manual control lever
	Boom deflection foot valve
	Two stereo speakers
Beverage cup holder	
	Coat and hat hook

	Cleanable floor mat
	Engine key switch
	LCD liquid crystal monitor
	Air conditioning system
Cab and interior trim	High and low gears shift
	Cigarette Lighter/Standby Power Supply
	Internal lighting in the cab
	Rearview mirror
	Top sunroof
	Intermittent multi-gear wiper
	Document bag
	Driving door locks and cabin locks
	Alarm horn
	Engine Emergency Stop Switch
	Rear window emergency exit
Safety and security configuration	Battery circuit breaker
	Boom and arm retaining valve
	Emergency escape hammer
	Anti-skid plate/anti-skid paste
	Hydraulic safety locking lever
	Emergency escape hammer
	Left and right rearview mirrors
Chassis system and shield	Dozer blade
	Bottom frame traction ring
	Protective device kit: chassis bottom sealing plate, walking motor sealing plate
	rubber belt track
Equipment	Boom 2.85m
	Arm 1.57 m

Equipment	Bucket 0.16m ³ earthwork bucket
	Swing post
	Battery (750 CCA)
Electrical system	60A alternator
	2.0 kW starter motor
	Work mode switching
	Boom work light
Lighting lamp	Front working light installed on cab top
	Cab interior lighting
Counterweight	710 KG counterweight
Technology	Load adaptive intelligent control system
Lubrication system	Concentrated rotary lubrication

	Falling object protection structure (FOPS)
Chassis system and shield	400 mm (16 ") three-rib track shoe
	Bulldozer shovel (with bulldozing deflection)
	Track dual guardrail device
Equipment	Quick coupler
	Hydraulic breaker
Electrical system	Travel alarm

Main specifications

Item	Unit	Parameters
Model	/	XE55E
Operating Weight	Kg	5700
Bucket Capacity	m ³	0.16
Engine Model	/	2403
Electronic Injection	/	√
Four Strokes	/	√
Water Cooling	/	√
Turbocharging	/	/
Air-to-air Intercooler	/	/
No. of Cylinder	/	4
Rated Power	kw/rpm	31.2/2200
Maximum Torque/Speed	N.m/rpm	159.8/1500
Displacement	L	2.434

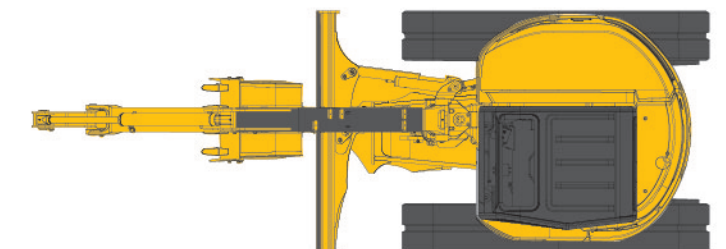
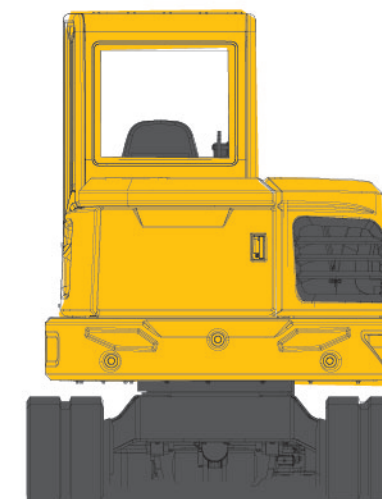
Optional configuration

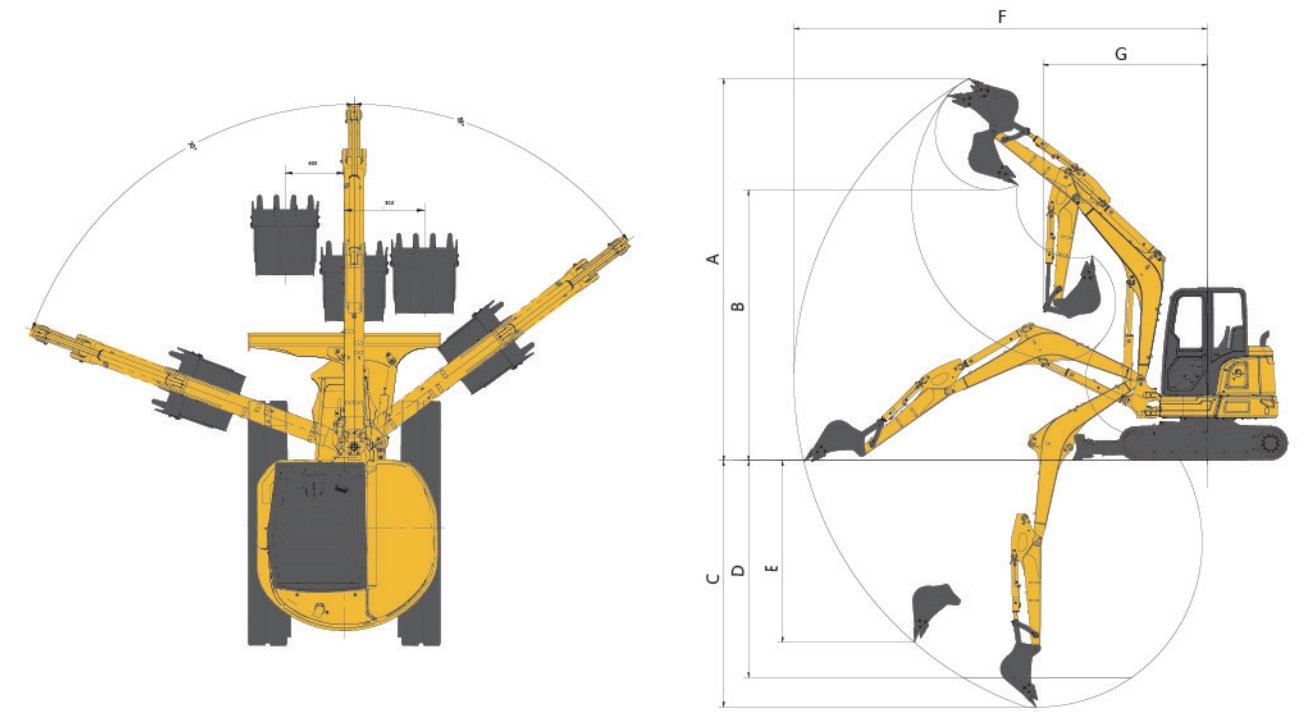
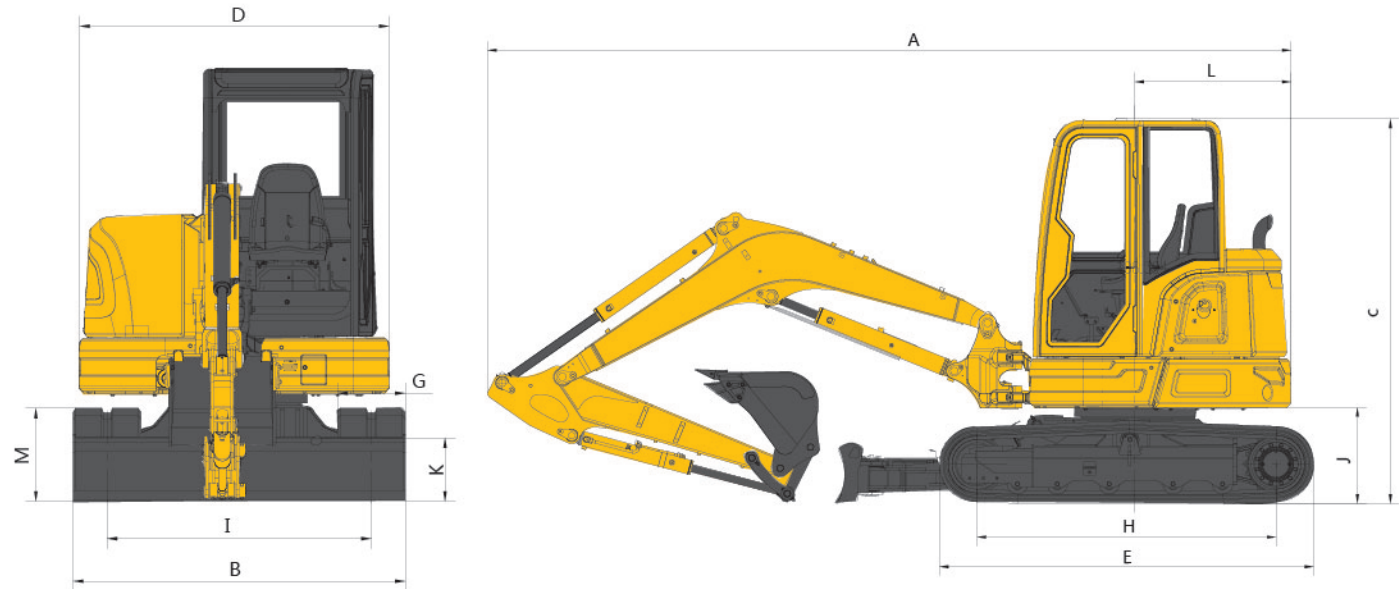
	Name of equipment
	Electrically controlled main pump
	Auxiliary hydraulic valve
	Earth-pushing deflection pipe
Hydraulic system	Quick change line
	Double standby hydraulic pipeline with adjustable flow
	Operation mode switching
	Hydraulic oil ISO VG 32, 68
	Spare valve plate
Cab and interior trim	Fire extinguisher
	Explosion-proof valve for boom and arm pipeline
Safety and security configuration	Rotary alarm lamp

Dimensions

	Item	Unit	Parameters
Main Performance	Travel Speed	km/h	4.6/2.8
	Swing Speed	r/min	9.5
	Gradeability	°	35
	Ground Pressure	kPa	32
	Bucket Digging Force	kN	44.5
	Arm Digging Force	kN	24.3
	Maximum Tractive Force	kN	52.8
Hydraulic System	Main Pump	/	/
	Rated Flow of Main Pump	L/min	158.4
	Main Safety Valve Pressure	MPa	30
	Travel System Pressure	MPa	30
	Swing System Pressure	MPa	24
	Pilot System Pressure	MPa	3.5
Oil Capacity	Fuel Tank Capacity	L	68
	Hydraulic Tank Capacity	L	46
	Engine Oil Capacity	L	9.5

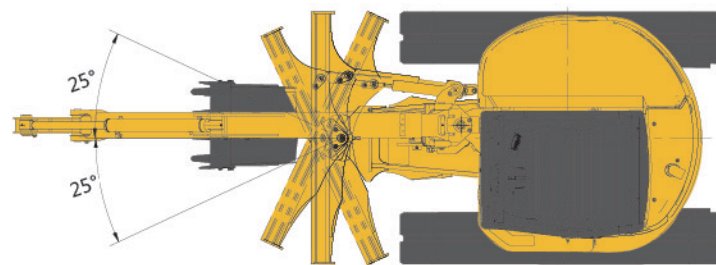
	Item	Unit	Parameters
Overall Dimensions	A Overall Length	mm	5340
	B Overall Width	mm	1960
	C Overall Height	mm	2555
	D Width of Platform	mm	1830
	E Track Length	mm	2490
	F Total Width of Chassis	mm	1960
	G Track Shoe Width	mm	400
	H Crawler base	mm	1990
	I Track Gauge	mm	1560
	J Counterweight Clearance	mm	637
	K Minimum Ground Clearance	mm	315
	L Minimum Tail Swing Radius	mm	1040
	M Track Height	mm	550





Working Range

Item	Unit	Parameters
Track Height	mm	550
Maximum Digging Height	mm	5650
Maximum Dumping Height	mm	4010
Maximum Digging Depth	mm	3640
Maximum Depth Cut for 2240mm(8 ft) Level Bottom	mm	3200
Maximum Vertical Wall Digging Depth	mm	2690
Maximum Digging Radius	mm	6110
Minimum Swing Radius	mm	2430



Lifting capacity

Lifting point height (m)	Rated lift capacity – Straight ahead (back) (kg)						Rated lift capacity – over-side (kg)					
	Lifting point radius (m)					Lifting capacity at maximum radius	Lifting point radius (m)					Lifting capacity at maximum radius
	1	2	3	4	5		1	2	3	4	5	
4				1260		*1160				800		730
3				1250		930				790		580
2			1900	1220	880	810			1150	760	550	510
1			1800	1180	860	810			1070	730	540	500
Ground		*1990	1760	1150	850	830		1900	1030	700	530	510
-1		3660	1750	1150		940		1910	1020	700		580
-2		*3300	1770			1250		1950	1040			760

Capacities marked with an asterisk(*) are limited by hydraulic capacities.