



All Rights Reserved

Materials and specifications are subject to change without notice.
Featured machines in photos may include additional equipment.
See your XCMG dealer for available options.



XE15E

Hydraulic Excavator

Euro Stage V



www.xcmg.com

XCMG Regional Departments:

Europe	(+86-516) 87739703 87739218 87739537	Africa	(+86-516) 87735009 87739222 87739283
West Asia & North Africa	(+86-516) 87739702 87739202 87739223	Central Asia	(+86-516) 87739236 87739239 87739538
Asia-Pacific	(+86-516) 87739128 87739500 87739529	America	(+86-516) 87739285 87739551 87739710

XUZHOU CONSTRUCTION MACHINERY GROUP IMP. & EXP. CO., LTD

Add: No.1, Tuolanshan Road, Xuzhou Economic Developing Zone, Jiangsu, China 221004

Fax: (+86-516) 87739230

E-mail: export@xcmg.com



Advanced Configuration

Ecological and economical

- ▶ Engine compliant with Euro stage V and North American Tier 4F Emission Standard
- ▶ The excellent matching of hydraulic system and engine is more powerful and fuel saving

Multiple application

- ▶ The stretchable undercarriage can ensure the stability, improve the passing ability and loading performance
- ▶ Tailless design, small radius of slewing to achieve small space flexible operation
- ▶ Multiple additional configurations meet with different operating requirements

Comfortable operating experience

- ▶ Detailed design concept improves comfort
- ▶ Color display provides convenient visual information



Excellent after-sales service

- ▶ Global after-sales service system and quick response mechanism
- ▶ Real-time technical consultation and maintenance

Convenient maintenance

- ▶ Advanced maintenance design concept helps your maintenance easier without dead angle

Improved durability

- ▶ Four point support cab, piping and wiring harness built-in
- ▶ Strengthened boom and arm structure , stress dispersing
- ▶ Upgrade undercarriage structure to improve load bearing performance

Ecological And Economical

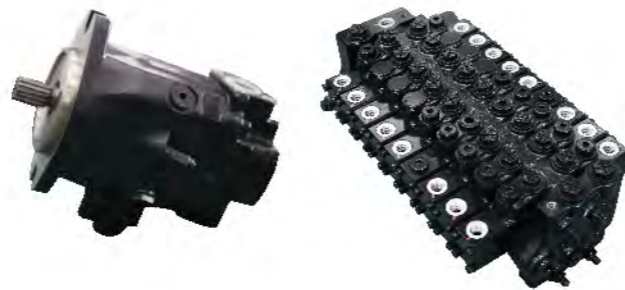
Power system

- ▶ Engine which compliant with Euro stage V and North American Tier 4F Emission Standard can effectively reduce fuel consumption and emission. The mechanical oil-injection pump has more reliable performance. Sufficient reserve of low speed torque and strong power.



Hydraulic system

- ▶ Key hydraulic components adopt up-to-date technology, featuring hydraulic system with low energy consumption fast response speed, accurate control and small impact so that strong digging force and excellent operating efficiency are ensured. The power of engine and hydraulic system match perfectly so that the engine can work in optimum fuel consumption level to improve fuel efficiency and save operational cost.



Multiple Application Conditions

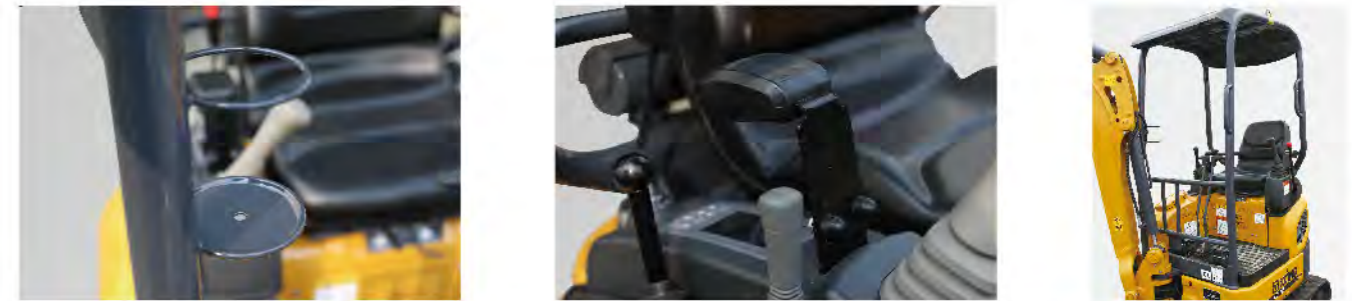
- ▶ The adoption of tailless design and super short slewing radius ensures the machine to work in narrow work conditions.
- ▶ The left and right boom swing angle is respectively 75° and 50°, it can realize complex operation together with upper structure slewing to ensure that the digging is parallel with wall surface in narrow space through the cooperation of superstructure slewing so as to easily deal with various operating conditions.
- ▶ The stretchable undercarriage can improve the passing ability of the whole vehicle, and the wide undercarriage during operation provides better stability and loading performance for the whole machine.



Comfortable And Reliable

Comfortable

- ▶ More intimate configurations such as newly designed wrist rest and cup holder improve operating comfort and convenience of the operator.



- ▶ The newly designed reversible armrest will effectively increase aisle dimension.
- ▶ New color LCD monitor compliant with ergonomics requirements provides more automatic control functions and visual information so that trouble shooting time is greatly shortened.



Reliable

- ▶ Four-point supporting cab compliant with safety standard ensures the strength, meanwhile improves vision and guarantees higher operation security.
- ▶ The stress bearing capability of boom and arm is emphatically strengthened so that their service lives are improved.



▶ The built-in pipelines and wiring harnesses give more efficient protection to improve service life.



▶ Optimize the structure of the undercarriage and box-type bulldozer, which is more solid and durable.



Maintenance And Service

- ▶ The refilling of fuel and water is convenient and efficient, which can be easily realized from antifreeze drain port, oil drain port, hydraulic oil drain port and diesel oil drain port at the bottom of turntable without removal of hood.
- ▶ A wide range of after - sales service system, quick - response rescue mechanism to ensure that you use at ease.



Standard Configuration

	Name of equipment	Direct Injection	XE15E
Engine	Engine model		D782
	Emission level		Euro V
	Manual preheating		
	Fuel strainer		
	Oil-water separator		
	Fuel filter		
	Radial seal air filter		
	Oil filter		
	Cleanable Radiator		
	Oil-water quick release device		
Hydraulic system	Mechanical rotation speed control		
	Unloading valve		
	Auxiliary hydraulic valve		
	Retractable and bulldozer switching circuit		
	Stop pressure relief		
	Hydraulic oil ISO VG 46		
Cab and interior trim	Single and double switchable hydraulic backup line		
	Adjustable seat armrest		
	Color LCD display with warning message, filter/liquid replacement information and hours of operation		
	Joysticks		
	Cup holder/file pocket		
	Cleanable floor mat		
	Retractable seat belt		
	High and low gears shift		

	Alarm horn
Safety and security configuration	Battery circuit breaker
	Overheat alarm mode
	Hydraulic safety locking lever
Chassis system and shield	Bottom frame traction ring
	Protective device kit: travel motor sealing plate
	Rubber crawler
	Retractable chassis
Equipment	Width adjustable dozer blade
	Boom
	Arm 0.95 m
Electrical system	Bucket 0.04 m ³ earthwork bucket
	Battery (325CCA)
	40 A alternator
Lighting lamp	1.2 kW starter motor
	Boom lamp
Counterweight	192 KG counterweightAlarm horn
Lubrication system	Rotary concentration

Optional Configuration

Hydraulic system	Hydraulic oil ISO VG 32, 68
Safety and security configuration	Falling object protection structure (FOPS)
Chassis system and shield	Steel crawler
	Quick coupler
Equipment	Bottom frame traction ring

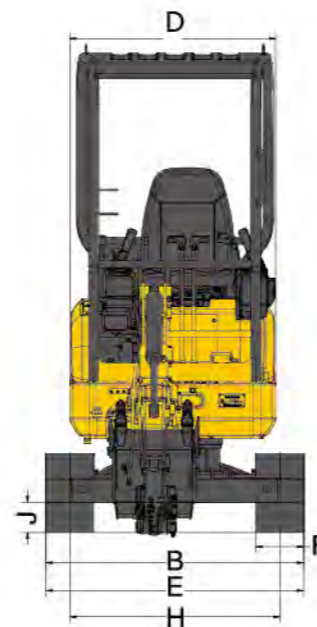
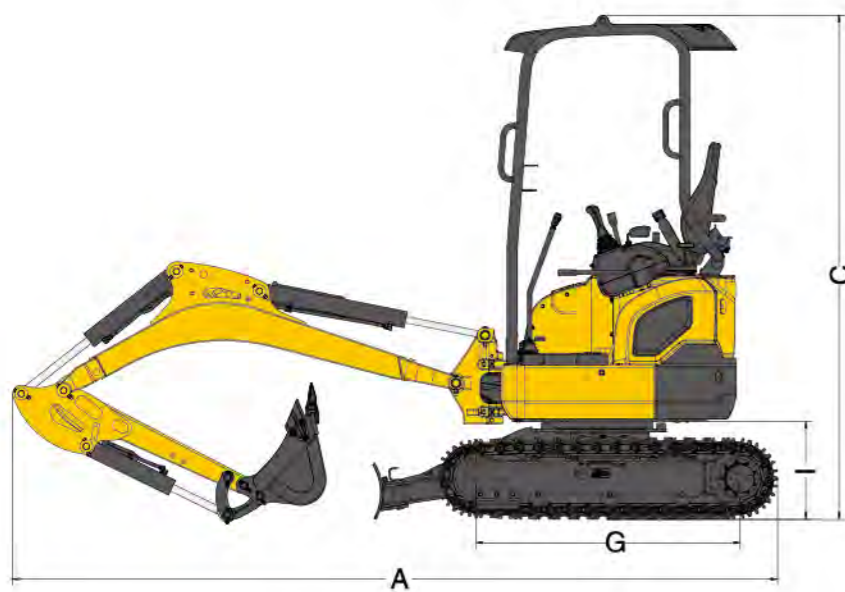
Main Specifications

Item	Unit	Parameters
Model	/	XE15E
Operating weight	Kg	1795
Bucket capacity	m ³	0.04
Engine	Model	/
	Direct Injection	/
	Four Strokes	/
	Water Cooling	/
	Turbo-charging	/
	No. of Cylinders	/
	(GB/T 17692)Rated net power	kw/rpm
	Maximum torque/speed	N.m
	Displacement	L
	Travel speed	km/h
Main Performance	Swing speed	r/min
	Gradeability	°
	Ground pressure	kPa
	Bucket digging force	kN
	Arm digging force	kN
	Maximum tractive force	kN
	Rated flow of main pump	L/min
	Working Pressure	MPa
	Travel system pressure	MPa
	Swing system pressure	MPa
Hydraulic System	Pilot system pressure	MPa
	Fuel tank capacity	L
	Hydraulic tank capacity	L
Oil Capacity	Engine oil capacity	L

	Item	Unit	Parameters
Standard Configuration	Length of boom	mm	1828
	Length of arm	mm	950
	Bucket capacity	m ³	0.04
Optional Configuration	Bucket capacity	m ³	
	Auxiliary tools and others	/	

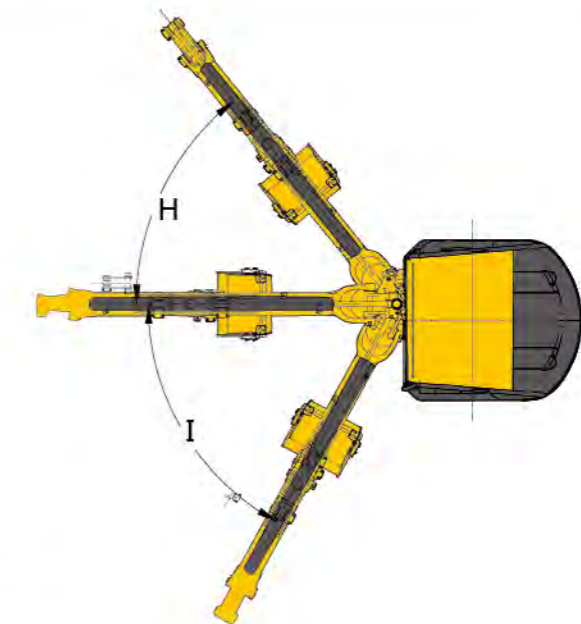
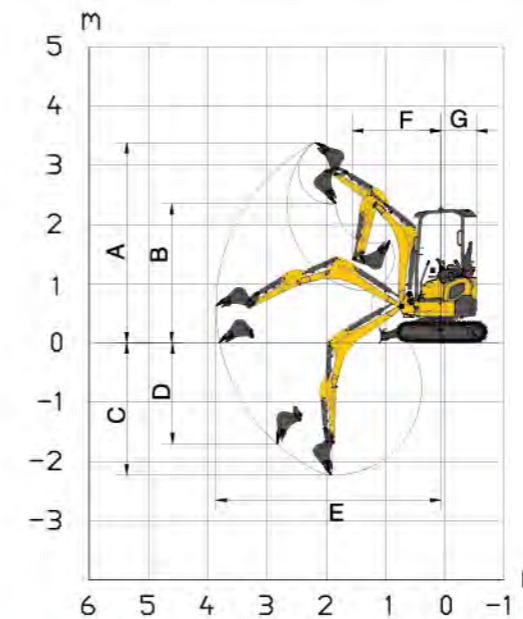
Appearance Size

	Item	Unit	Parameters
Appearance size	A Overall length	mm	3560
	B Overall width	mm	990/1240
	C Overall height	mm	2350
	D Width of platform	mm	990
	E Total width of chassis	mm	990/1240
	F Width of crawler	mm	230
	G Crawler base	mm	1270
	H Track gauge	mm	760/1010
	I Counterweight clearance	mm	450
	Dozer blade(width/height)	mm	145



working Range

	Item	Unit	Parameters
working range	A Maximum digging height	mm	3475
	B Maximum dumping height	mm	2415
	C Maximum digging depth	mm	2290
	D Maximum vertical wall digging depth	mm	1750
	E Maximum digging radius	mm	3900
	F Minimum swing radius	mm	1550
	G Minimum tail swing radius	mm	620
	Maximum Dozer Lifting Height	mm	260
	Maximum Dozer Cutting Depth	mm	180



Lifting Capacity

Lifting point height (m)	Rated lift capacity – Straight ahead (back) (kg)				Rated lift capacity – over-side (kg)			
	Lifting point radius (m)			Lifting capacity at maximum radius	Lifting point radius (m)			Lifting capacity at maximum radius
	1	2	3		1	2	3	
2		*296.2		313.2		*296.2		256.8
1		536.2	296.7	258.3		427.8	242.3	211.2
Ground		500.6	285.8	256.8		394.7	231.7	208.9
-1	*970.1	497.3		316.9	*970.1	391.6		255.6

Capacities marked with an asterisk(*) are limited by hydraulic capacities.